

---

To:	Outback MAX Users	Date:	June 23, 2017
From:	Global Customer Care	Subject:	Outback MAX v2.2 and eDriveXD / eDriveXC v1.5 Software Update

---

**Product(s) Affected:**

Outback MAX and eDriveXD / eDriveXC

**Scope:**

This document provides software installation instructions for Outback MAX v2.2 and eDriveXD / eDriveXC v1.5.

MAX v2.2 software is required when pairing the Outback eDriveXD or eDriveXC steering system with Outback MAX. If pairing MAX with eDriveTC or eDriveX, DO NOT load MAX v2.2 software as it will cause incompatibility issues.

**Description of Changes:**

- Added steering performance improvements for swather and track machine tune sets
- Improved heading filters and direction detection for swathers and track machines.
- Added improved calibration procedures for swathers and track machines.

To take advantage of the improvements listed above, visit [www.OutbackGuidance.com](http://www.OutbackGuidance.com) and navigate to the Software Updates page for the software downloads.

You can also download the MAX User Guide from the Terminals Technical Documentation section at [www.OutbackGuidance.com](http://www.OutbackGuidance.com) or call Outback Customer Service at (800) 247-3808. There are two user guides for MAX: one for Job mode and one for Task mode (supporting ISO Advanced Task Controller and Multi Product functionality). Download the user guide that applies to your software.

**NOTE** - Export all Vehicles, Implements, Jobs, and Templates to a USB drive and save to a computer before starting this update. If not, these files will be incompatible with older versions of software.

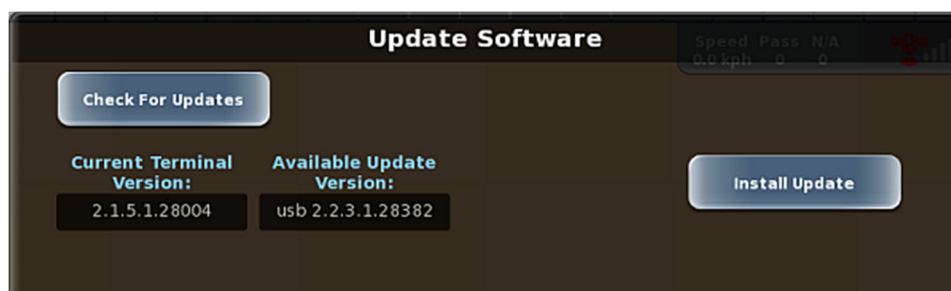
**Installation Instructions for Outback MAX v2.2**

1. Download MAX 2.2.3.1.28382 software from the Outback Guidance website and save it to your computer.
2. Copy the OutbackMax-update-v2.2.3.1.28382.ota file to the USB drive provided in your MAX kit.
3. Verify the MAX terminal is powered on. Insert the USB drive in either USB port on the terminal.
4. Press **Menu > Diagnostics > Software Update** to display the Update Software screen.

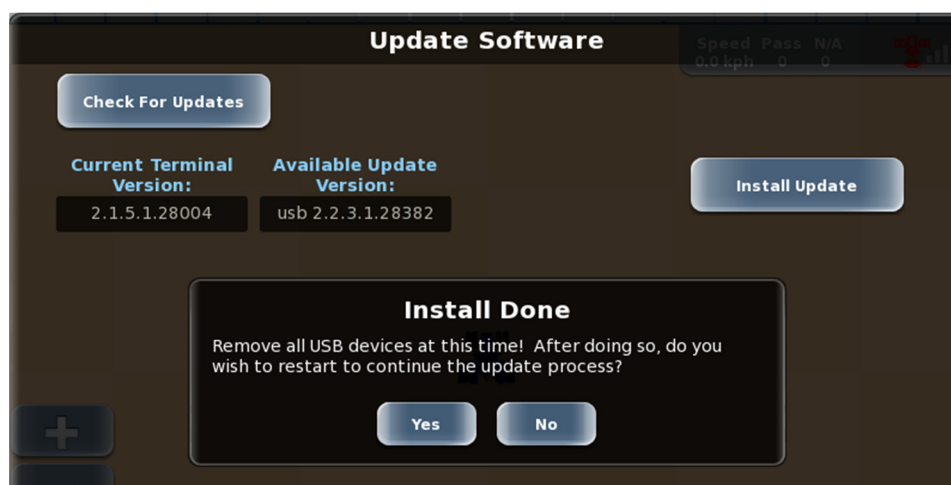


5. Press **Install Update** to copy the update to the MAX terminal hard drive.

**Copy process will take several minutes.**



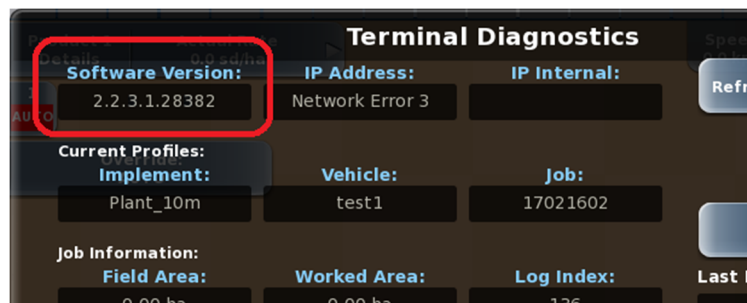
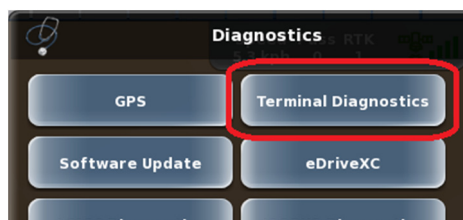
When the copy process is complete, a message appears indicating it is safe to power down the terminal to begin the update process.



6. Press and hold the power button until the terminal powers down.
7. Remove the USB drive from the terminal then power on the terminal. The AgJunction splash screen appears for several minutes then the update messages begin to appear.

**Update process will take several minutes.**

8. When prompted to do so, reboot the terminal to complete the software installation.
9. Press **Menu > Diagnostics > Terminal Diagnostics** to display the Terminal Diagnostics screen, then verify the Software Version field displays the correct MAX version.



## Installation Instructions for eDriveXD/eDriveXC v1.5

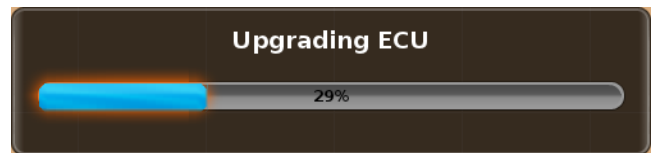
1. Download **UsbUpdate\_1\_5\_1\_1\_35711.zip** from the Outback Guidance website and save it to your computer.
2. Unzip the software by double-clicking the **UsbUpdate\_1\_5\_1\_1\_35711** file.
3. Copy the **update\_package\_1\_5\_1\_1\_35711.updt** file to the root of a USB drive. (Note: DO NOT put this file in a folder. It must be on the root of the USB directory.)
4. Power on the MAX terminal and the eDriveXD / eDriveXC ECU. Insert the USB drive into the USB port on the eDriveXD / eDriveXC ECU.

5. On the MAX terminal, press **Menu > Diagnostics > eDriveX > Service** to display the eDriveX Service screen. The Upgrade Version field shows the available version on the USB drive.

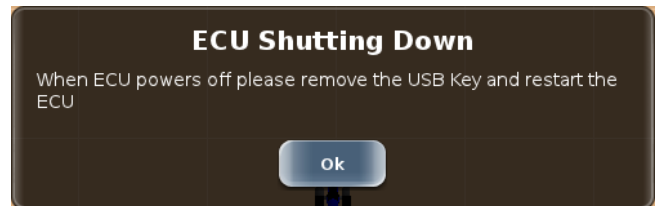


6. Press **Upgrade**. A progress bar appears showing the upgrade status. DO NOT remove the USB drive or power the terminal or ECU off during this time.

**Update process will take several minutes.**



7. When the installation is complete, the message at right appears. When the ECU powers off, remove the USB drive and reboot the ECU.



8. On the terminal, press **Menu > Diagnostics > eDriveX > Service** to display the eDriveX Service screen, then verify the Current Version field displays the correct ECU version.

